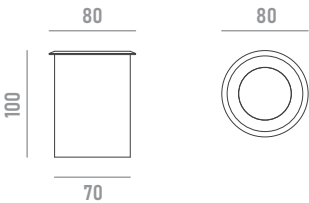
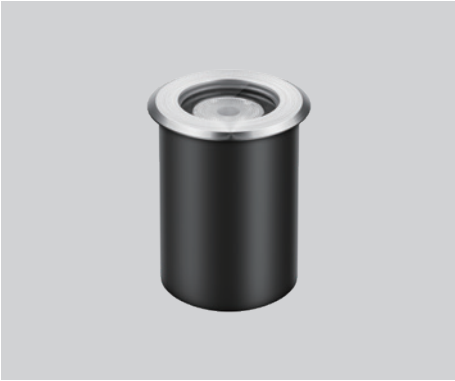


PRODUCT DATASHEET

Last information update: Mar. 2025



SONAX MINI

1920W5

In-ground LED uplighter for outdoor applications

Technical Features

Power	5W
Input voltage	DC24V (constant voltage)
Insulation class	III
Delivered flux	225 lm ±10%
Light distribution type	Symmetrical / elliptical
Beam angle	15°, 20°, 30°, 45° / 15°x60°
Light colour / CCT	RGBW
CRI	-
Source type	LED (4-IN-1)
LED number	1
MacAdam step	-
Power supply	Not included
Control	DMX512 (built-in DMX decoder)
Protection index	IP67
Impact resistance	IK10
Lifetime	50,000 hours Ta=25°C

Construction

Stainless steel body, stainless steel trim, tempered glass cover, polycarbonate optical lenses, plastic recessed box.

Temperature Limits

Ambient operating temperature	from -20°C to +50°C
Storage temperature	from -40°C to +70°C

Installation

Ground recessed with recessed box (standard).

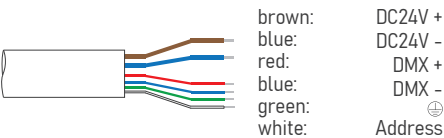
Finish Colours

Trim in Stainless Steel (standard). Other RAL colours on request.

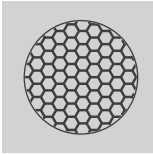


Wiring

Power/DMX input cable MALE connector 1,000 mm
Power/DMX output cable FEMALE connector 1,000 mm

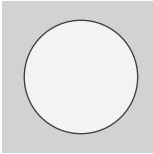


Optional Accessories



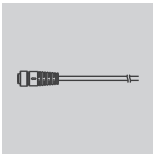
honeycomb louvre
*can not be ordered separately

A02



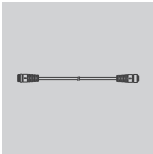
frosted glass
*can not be ordered separately

A05



leader cable with female 6-pin waterproof connector for Power/DMX
* specify cable length to complete order

LC6



extension cable with male and female 6-pin waterproof connector for Power/DMX
* specify cable length to complete order

EC6

Ordering Information

example: 1920W5.0015.4130K.01+A02

1920W5 · · · +

product	beam angle		light colour / CCT		finish colour	accessory	
SONAX MINI 5W	0015	15°	4130K	RGB+3000K	01 stainless steel	A02	honeycomb louvre
	0020	20°	4140K	RGB+4000K		A05	frosted glass
	0030	30°				LC6	leader cable
	0045	45°				EC6	extension cable
	1560	15°x60°					