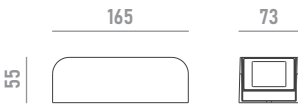
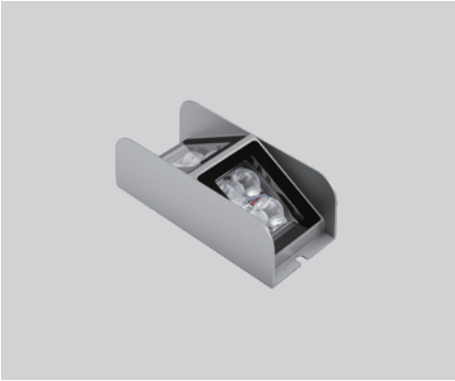


PRODUCT DATASHEET

Last information update: Mar. 2025



BLADE-M

2020W20

LED window accent light for outdoor applications

Technical Features

|                         |                               |
|-------------------------|-------------------------------|
| Power                   | 20W                           |
| Input voltage           | DC24V (constant voltage)      |
| Insulation class        | III                           |
| Delivered flux          | 600 lm ±10%                   |
| Light distribution type | Elliptical                    |
| Beam angle              | 8°x180°                       |
| Light colour / CCT      | RGBW                          |
| CRI                     | -                             |
| Source type             | LED                           |
| LED number              | 8                             |
| MacAdam step            | -                             |
| Power supply            | Not included                  |
| Control                 | DMX512 (built-in DMX decoder) |
| Protection index        | IP65                          |
| Impact resistance       | IK05                          |
| Lifetime                | 50,000 hours Ta=25°C          |

Construction

High weather-resistant fluorocarbon painted die-cast aluminum body, tempered glass cover, polycarbonate optical lenses.

Temperature Limits

|                               |                     |
|-------------------------------|---------------------|
| Ambient operating temperature | from -20°C to +50°C |
| Storage temperature           | from -40°C to +70°C |

Installation

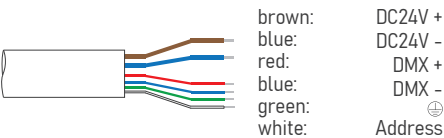
Surface mounted with base (standard).

Finish Colours

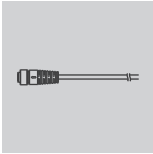
RAL9023 Pearl Dark Grey (standard). Other RAL colours on request.

Wiring

Power/DMX input cable MALE connector 1,000 mm  
Power/DMX output cable FEMALE connector 1,000 mm

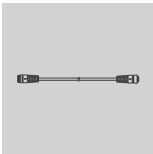


Optional Accessories



leader cable with female 6-pin waterproof connector for Power/DMX  
\* specify cable length to complete order

LC6



extension cable with male and female 6-pin waterproof connector for Power/DMX  
\* specify cable length to complete order

EC6

Ordering Information

example: 2020W20.RGB30K.01+LC6(specify length)

2020W20 · [ ] · [ ] + [ ]

| product     | light colour / CCT |           | finish colour |         | accessory |                 |
|-------------|--------------------|-----------|---------------|---------|-----------|-----------------|
| BLADE-M-20W | RGB30K             | RGB+3000K | 01            | RAL9023 | LC6       | leader cable    |
|             | RGB40K             | RGB+4000K |               |         | EC6       | extension cable |