

PRODUCT DATASHEET

Last information update: May 2023



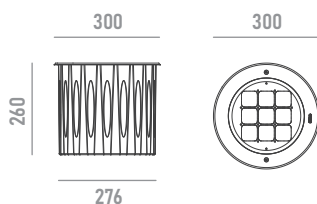
SONAX

1914W80

Inground LED luminaire for outdoor applications

Technical Features

Power	80W
Input voltage	DC24V (constant voltage)
Insulation class	III
Delivered flux	6,000 lm ±10%
Light distribution type	symmetrical / elliptical
Beam angle	5°, 8°, 12°, 20°, 30°, 45°, 60° 5°x20°, 10°x70°
Light colour / CCT	2700K, 3000K, 4000K
CRI	80
Source type	LED
LED number	9
MacAdam step	5
Power supply	Not included
Control	ON/OFF
Protection index	IP67
Impact resistance	IK10
Walk over	yes
Drive over	yes
Lifetime	50,000 hours Ta=25°C



Construction

Aluminum body and recessed box, tempered glass cover, stainless steel trim, polycarbonate optical lenses.

Temperature Limits

Ambient operating temperature	from -20°C to +50°C
Storage temperature	from -40°C to +70°C

Installation

Ground recessed with recessed box.

Finish Colours

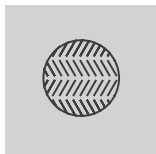
Stainless steel (for trim) as standard colour. RAL colours on request.

Wiring

Power input cable OPEN END 500mm



Optional Accessories



accessory for improved safety
*can not be ordered separately

anti-slip glass

Ordering Information

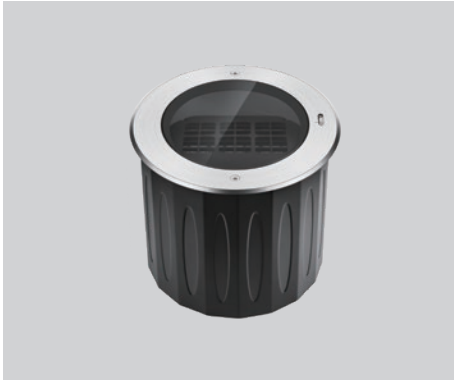
example: 1914W80.0005.2780.01+A1

1918W80 · [] · [] · [] + []

product	beam angle	light colour / CCT	finish colour	accessory
SONAX 80W	0005 5°	2780 2700K RA80	01 stainless steel	A1 anti-slip glass
	0008 8°	3080 3000K RA80		
	0012 12°	4080 4000K RA80		
	0020 20°			
	0030 30°			
	0045 45°			
	0060 60°			
	0520 5°x20°			
1070 10°x70°				

PRODUCT DATASHEET

Last information update: May 2023



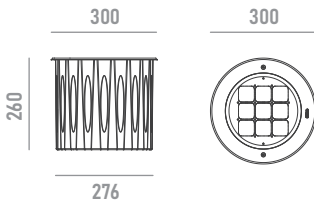
SONAX

1914W80(220V)

Inground LED luminaire for outdoor applications

Technical Features

Power	80W
Input voltage	AC100-240V
Insulation class	I
Delivered flux	6,000 lm ±10%
Light distribution type	symmetrical / elliptical
Beam angle	5°, 8°, 12°, 20°, 30°, 45°, 60° 5°x20°, 10°x70°
Light colour / CCT	2700K, 3000K, 4000K
CRI	80
Source type	LED
LED number	9
MacAdam step	5
Power supply	built-in
Control	ON/OFF
Protection index	IP67
Impact resistance	IK10
Walk over	yes
Drive over	yes
Lifetime	50,000 hours Ta=25°C



Construction

Aluminum body and recessed box, tempered glass cover, stainless steel trim, polycarbonate optical lenses.

Temperature Limits

Ambient operating temperature	from -20°C to +50°C
Storage temperature	from -40°C to +70°C

Installation

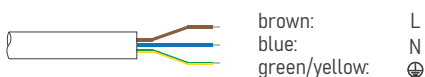
Ground recessed with recessed box.

Finish Colours

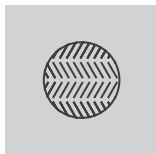
Stainless steel (for trim) as standard colour. RAL colours on request.

Wiring

Power input cable OPEN END 500mm



Optional Accessories



accessory for improved safety
*can not be ordered separately

anti-slip glass

Ordering Information

example: 1914W80(220V).0005.2780.01+A1

1914W80(220V) · [] · [] · [] + []

product	beam angle	light colour / CCT	finish colour	accessory
SONAX 80W	0005 5°	2780 2700K RA80	01 stainless steel	A1 anti-slip glass
	0008 8°	3080 3000K RA80		
	0012 12°	4080 4000K RA80		
	0020 20°			
	0030 30°			
	0045 45°			
	0060 60°			
	0520 5°x20°			
	1070 10°x70°			